



21st IARU World ARDF Championships

August 27 – September 2, 2023
Liberec, Czechia

Bulletin no. 4



Dear sport and ARDF friends,

On behalf of the Czech Radio Club we would like to invite you all to the North Bohemia in the Czechia for the 21st IARU World ARDF Championships. North Bohemia is a very diverse region with many nature reserves and protected areas. Its regional capital and the Championships venue, Liberec, is surrounded by Jizera Mountains and Lusatian Mountains. We hope you will appreciate beautiful Bohemian forests as much as we do.

We would be also happy to see you all in the Training camp, held between August 24 and 26, 2023.

We are looking forward to meeting you in Liberec!

Miroslav Vlach, OK1UMY

Chairman of the organizing committee

Organizer:

IARU Region 1, Czech Radio Club (CRC)

Competition office during all competitions:

The Dormitory of Technical University of Liberec

Address: 17.listopadu 584, Liberec, Czechia

email: info@ardf2023.cz

phone: + 420 728 192 716

web: <http://www.ardf2023.cz/>

Event center and accommodation:

The Dormitory of Technical University of Liberec

Address: 17.listopadu 584, Liberec, Czechia

GENERAL INSTRUCTIONS

Detailed program of the Championships 2023

Sunday, August 27 – Arrival, opening ceremony

12.00 Opening of the competition office
12.00-14.30 Lunch
15.30-17.00 Training for all competitions
17.30-19.00 Dinner
19.30 Opening ceremony
21.00 Team officials' meeting (building C, 2nd floor – meeting room)

Monday, August 28 – 1st classics

1st classics: 3,5 MHz (W19, W21, W35, M19, M21, M40)
 144 MHz (W45, W55, W65, M50, M60, M70)
06.30-08.00 Breakfast, lunchpackage
08.00 Departure of buses to starting area (competitors and officials)
09.30 Departure of buses to finish area (officials and visitors)
17.00 Team officials' meeting
17.30-19.00 Dinner

Tuesday, August 29 – Sprint

06.30-08.00 Breakfast
08.00 Departure of buses to starting area (competitors and officials)
08.30 Departure of buses to finish area (officials and visitors)
13.00-15.00 Lunch
17.00 Team officials' meeting
17.30-19.00 Dinner
19.30-21.00 Awarding ceremony (1st classics + sprint)

Wednesday, August 30 – The day off

07.30-09.00 Breakfast
12.00-14.00 Lunch
14.30 45th IARU R1 ARDF WG Plenary meeting (building C, 2nd floor – meeting room)
17.00 Team officials' meeting (if necessary)
17.30-19.00 Dinner

Thursday, August 31 – 2nd classics

2nd classics: 144 MHz (W19, W21, W35, M19, M21, M40)
 3.5 MHz (W45, W55, W65, M50, M60, M70)
06.30-08.00 Breakfast, lunch package
08.00 Departure of buses to starting area (competitors and officials)
09.30 Departure of buses to finish area (officials and visitors)
17.00 Team officials' meeting
17.30-19.00 Dinner

Friday, September 1 – Foxoring

06.30-08.00	Breakfast
08.00	Departure of buses to starting area (competitors and officials)
09.30	Departure of buses to finish area (officials and visitors)
13.00-15.00	Lunch
17.00-18.30	Dinner
19.00-20.30	Awarding ceremony (2 nd classics, foxoring)
20.30-23.00	Closing ceremony and Hamfest

Saturday, September 2 – Departure

07.30-09.00	Breakfast
-------------	-----------

Transport Liberec – Praha (Václav Havel Airport) – September 2

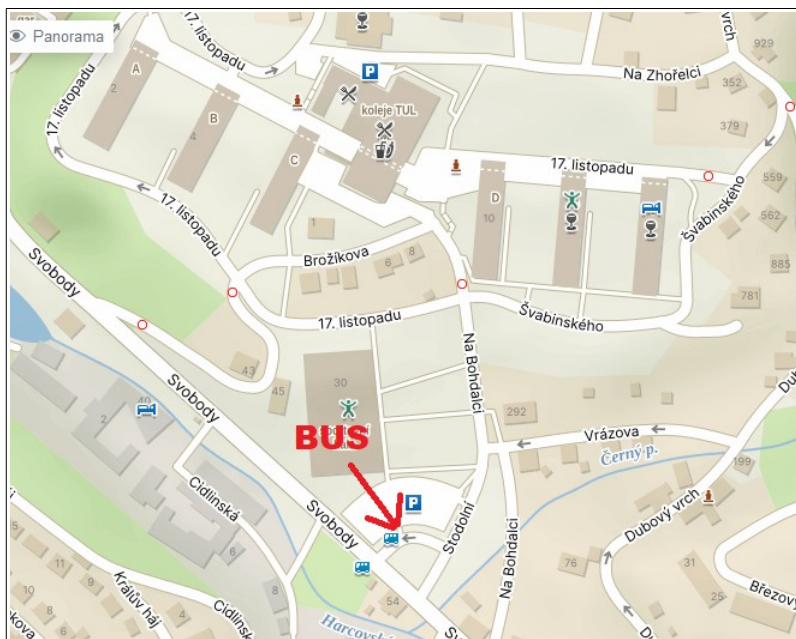
02:00	car	1 person	flight 06:05
04:00	car	4 persons	flight before 10:00
07:00	bus	43 persons	flight before 14:35
12:00	bus	53 persons	flight before 19:30

It is necessary to order breakfast packages for Departure day before 16.00 on Wednesday, August 30. Packages will be given out on Friday, September 1, during dinner.

Medical care will be provided at the place of accommodation.

THE ENTRANCE INTO CANTEEN AND TO THE AUDITORIUM WILL BE ALLOWED ONLY WITH AN ID CARD!

Bus station for departure to all competitions will be 250 m south from the dormitory:



Technical parameters

Categories:

According to the Rules (15.2): W19, M19, W21, M21, W35, M40, W45, M50, W55, M60, W65, M70

Change of category and starting group:

Change of category and starting group can be made until 10.00 of the day before competition in following form:

Form to change category /starting group

State	Start.No.	Name	Surname	Original category	Original starting group	New category	New starting group

Ranking:

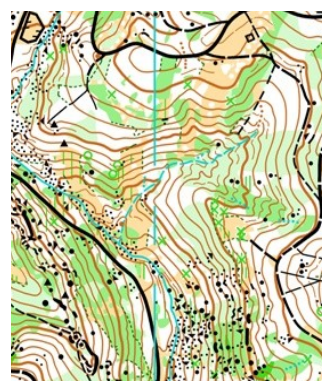
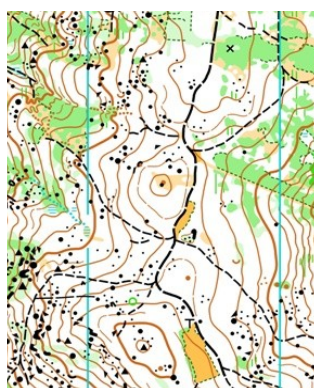
Individual for each category and each competition, team ranking for each category for the two classics. Competitors at 1.-3. places will be awarded with medals and certificates.

Maps and finish points:

1 st classics	Maliník	1 : 10 000, E=5m, 42x30 cm
Sprint	Skalní brána	1 : 5 000, E=5m, 20x29 cm
2 nd classics	Břízky	1 : 10 000 , E=5m, 30x29 cm
Foxoring	Bramberk	1 : 10 000 , E=5m, 33x28 cm

1 st classics	finish GPS: 50.7909253N, 15.1300094E
Sprint	finish GPS: 50.8922981N, 15.1085303E
2 nd classics	finish GPS: 50.7378783N, 15.1780961E
Foxoring	finish GPS: 50.7487411N, 15.2148317E

All maps are IOF standards, status: 2021, revised 2023, printed on waterproof material Pretex.



Terrain characteristics, clothing, weather:

Terrain is mountainous with many stones and rocks, low scrubs (mostly blueberries) and occasional waterlogged areas. There is alternating continuous forest.

Transmitters and antennas:

3.5 MHz transmitters for sprint (1 minute cycle - 12s:48s)

- RF power 1 W
- antenna: 8 m vertical + 2m diameter circular counterpoise
- frequency: TX 1-5: MOE-MO5 keying speed 50 PARIS 3.53 MHz
spectators control: S keying speed 50 PARIS 3.55 MHz
TX 1F-5F: MOE-MO5 keying speed 70 PARIS 3.57 MHz
finish beacon: MO keying speed 50 PARIS 3.60 MHz

3.5 MHz transmitters (classics)

- RF power 3 W
- frequency: TX 1-5: MOE-MO5 3.53 MHz, finish beacon: MO 3.60 MHz
- antenna: 8 m vertical + 8 m single radial counterpoise

144 MHz transmitters (classics)

- RF power 1 W ERP
- frequency: TX 1-5: MOE-MO5 144.50 MHz, finish beacon: MO 144.85 MHz
- antenna: crossed dipoles 2.5 m above ground level

3.5 MHz transmitters for foxoring (continuous)

- RF power 10 mW, beacon: 1 W
- antenna: field transmitters 30 cm vertical + no counterpoise,
finish beacon 8 m vertical + 8 m single radial counterpoise
- frequency: TX 1, 2, 1F, 2F MOE, MOI 3.53 MHz
TX 3, 4, 3F, 4F MOS, MOH 3.55 MHz
TX 5, 5F MO5 3.57 MHz
finish beacon MO 3.60 MHz
- TX 1-5, finish beacon: keying speed 50 PARIS, TX 1F-5F: keying speed 70 PARIS

Flags:

- 3.5 MHz band: standard 30x30 cm 3-sided white and orange flag at all controls
- 144 MHz band: 30x30 cm 3-sided white and orange flag with a blue vertical stripe at all controls
- Sprint: 30x30 cm 3-sided white and orange flag at S (spectator) and B (beacon) controls, red/white striped SI stand (no flag) at all other controls.
- Foxoring: 30x30 cm 3-sided white and orange flag at B (beacon) control, no flag and black SI stand at all other controls.

Registering devices: SportIdent at all controls (NOT in the AIR mode), control numbers and bands are written on the SI units.

Note on use of GPS devices: The use of satellite positioning devices is allowed provided they do not contain digital map of the terrain.

Note on thunderstorm: In a case of a severe thunderstorm, the Chairman of the Jury may recall the competition (27.5 of the Rules)—in such case, it will be announced to competitors by switching off all the transmitters with an exception of the beacon and TX No. 1 (MOE, not necessarily the one placed in terrain) which both remain operating continuously. The competitors shall set for the finish immediately.

Insurance and Medical Care: First aid facility will be available at the finish areas for all competitions. No cost to the participant applies for on-site minor treatment; however, the cost for ambulance transportation, emergency department visits, and clinic visits will be the participant's responsibility. Thus, we recommend you to purchase an insurance covering such expenses.

EVERY COMPETITOR IS OBLIGED TO UNDERGO AN ANTI-DOPING CONTROL UPON REQUEST!!!

Results:

<https://results.ardf2023.cz>

or

<https://vysledky.ardf2023.cz>

Online information, video, commentary :

<https://www.facebook.com/people/21st-World-ARDF-Championships-Jizersk%C3%A9-hory/100090068581449/>

https://www.instagram.com/wac_2023_czech/

<https://www.youtube.com/@radiovyorientacnibehcze660>

<https://www.facebook.com/RobaciCze>

DETAILED INFORMATION - OPENING CEREMONY - AWARDING CEREMONY - CLOSING CEREMONY

Auditorium of Technical University of Liberec, Univerzitní náměstí 1410/1

GPS: 50.7732689N, 15.0764603E

Centrum - Auditorium cca 1 km on foot



Sunday, August 27 - Opening Ceremony

- 19.00 Auditorium opening
- 19.30 Performance of the music group Aries
- 19.40 Welcoming, parade of national team representatives (teams will appoint one representative that will come to the stage)
- 19.50 Speeches of guests and official opening of the World Championships
- 20.00 Performance of the music group Aries
- 20.10 Ending

Tuesday, August 29 - Awarding Ceremony (classic 1, sprint)

- 19.00 Auditorium opening
- 19.30 Welcoming
- 19.35 Awarding ceremony
 - Classic 1 (individuals + teams) - W19-W65, M19-M70
 - Sprint (individuals) - W19-W65, M19-M70
- 21.00 Ending

Friday, September 1 - Awarding and Closing Ceremony (classic 2, foxoring)

- 18.30 Auditorium opening
- 19.00 Welcoming
- 19.05 Awarding ceremony
 - Classic 2 (individuals + teams) - W19-W65, M19-M70
 - Foxoring (individuals) - W19-W65, M19-M70
- 20.30 Closing Ceremony
- 20.30 - 23:00 Hamfest

DETAILED INFORMATION - TRAINING (MODEL EVENT)

Sunday, August 27

15.30 – 16.00 Foxoring

15.30 – 17.00 144 MHz classic

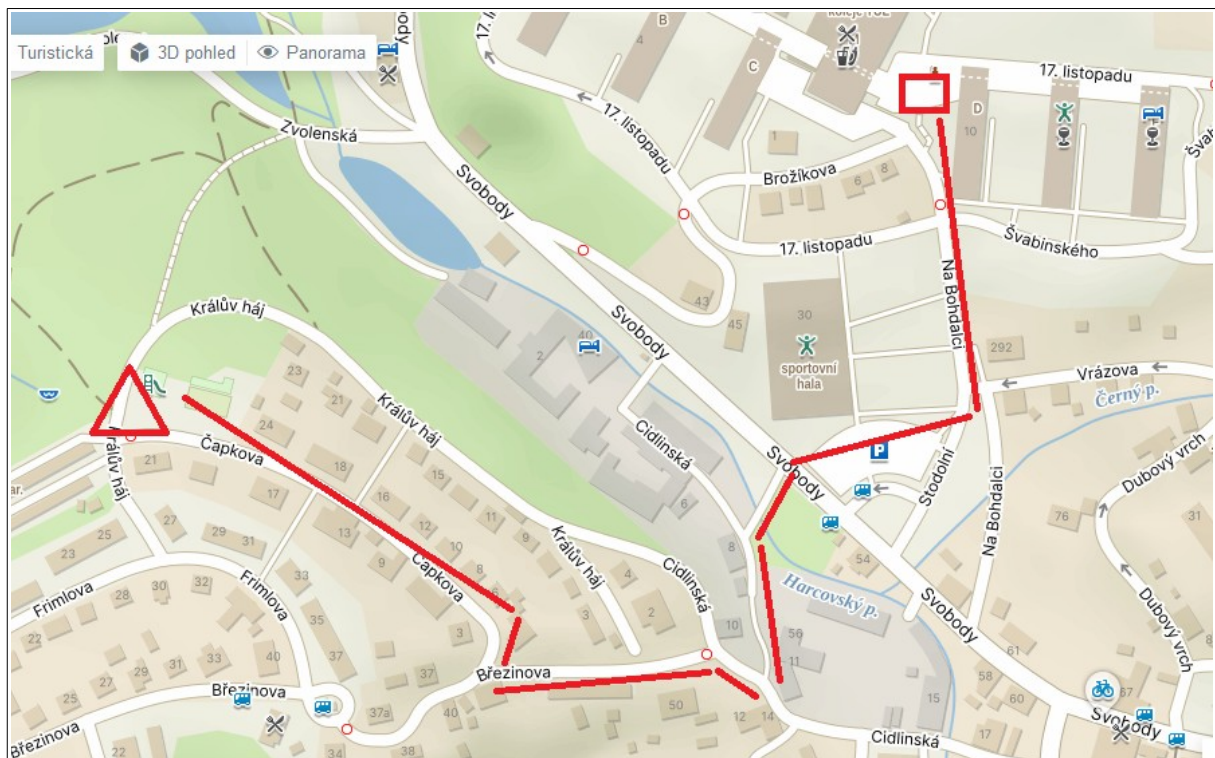
16.00 – 16.30 Sprint

16.30 – 17.00 3,5 MHz classic

Gathering area for training: Liberec, Králův háj street

GPS : 50.7687839N, 15.0816208E

(event center – gathering area cca 800 m on foot) – the route will be marked with ribbons



DETAILED INFORMATION - CLASSICS 1

Monday, August 28

1st classics: 3,5 MHz (W19, W21, W35, M19, M21, M40)
144 MHz (W45, W55, W65, M50, M60, M70)

Schedule

06.30-08.00 Breakfast, lunchpackage
08.00 Departure of buses to starting area (competitors and officials)
09.30 Departure of buses to finish area (officials and visitors)
10.00 Start 00

Bus departures from finish area to the event center (approximately)

Rainy weather: 13:00 - 13:30 - 14:00 - 14:45 - 16:00

Sunny weather: 13:30 - 14:00 - 14:30 - 15:00 - 16:00

17.00 Team officials' meeting

17.30-19.00 Dinner

Map Maliník 1 : 10 000, E=5m, size 42 x 30 cm, printed on waterproof material Pretex.
It is forbidden to run on the road!

Limit 150 min

Competitors will be called to pre-start area **15min before their start!**

3.5 MHz transmitters (classics)

- RF power 3 W

- frequency: TX 1-5: MOE-MO5 3.53 MHz, finish beacon: MO 3.60 MHz

- antenna: 8 m vertical + 8 m single radial counterpoise

144 MHz transmitters (classics)

- RF power 1 W ERP

- frequency: TX 1-5: MOE-MO5 144.50 MHz, finish beacon: MO 144.85 MHz

- antenna: crossed dipoles 2.5 m above ground level

Flags:

- 3.5 MHz band: standard 30x30 cm 3-sided white and orange flag at all controls

- 144 MHz band: 30x30 cm 3-sided white and orange flag with a blue vertical stripe at all controls

Registering devices:

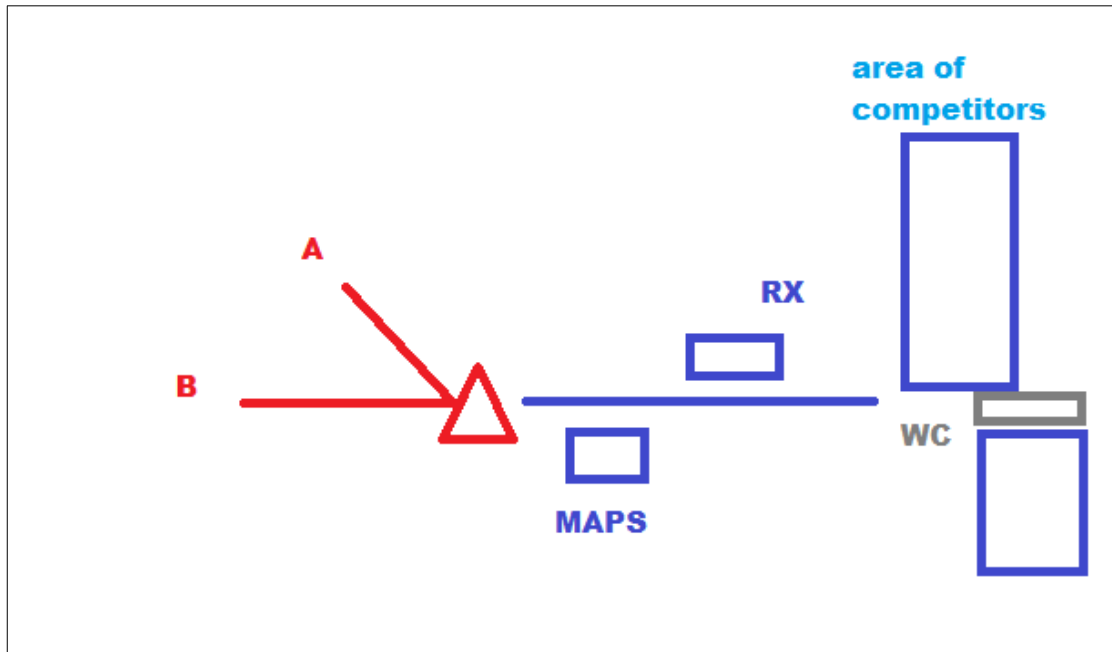
SportIdent at all controls (NOT in the AIR mode), control numbers and bands are written on the SI units.

List of transmitter and band assignments for each category:

Band	Category	TX	Beacon	Corridor
80 m	W19	1 2 4 5	B	B
80 m	W21	1 2 3 5	B	B
80 m	W35	1 2 3 4	B	B
80 m	M19	2 3 4 5	B	A
80 m	M21	1 2 3 4 5	B	A
80 m	M40	1 3 4 5	B	A
2m	W45	1 2 3 4	B	B
2m	W55	1 2 5	B	B
2m	W65	2 3 5	B	B
2m	M50	1 2 3 4 5	B	A
2m	M60	1 2 4 5	B	A
2m	M70	2 4 5	B	A

Start organisation:

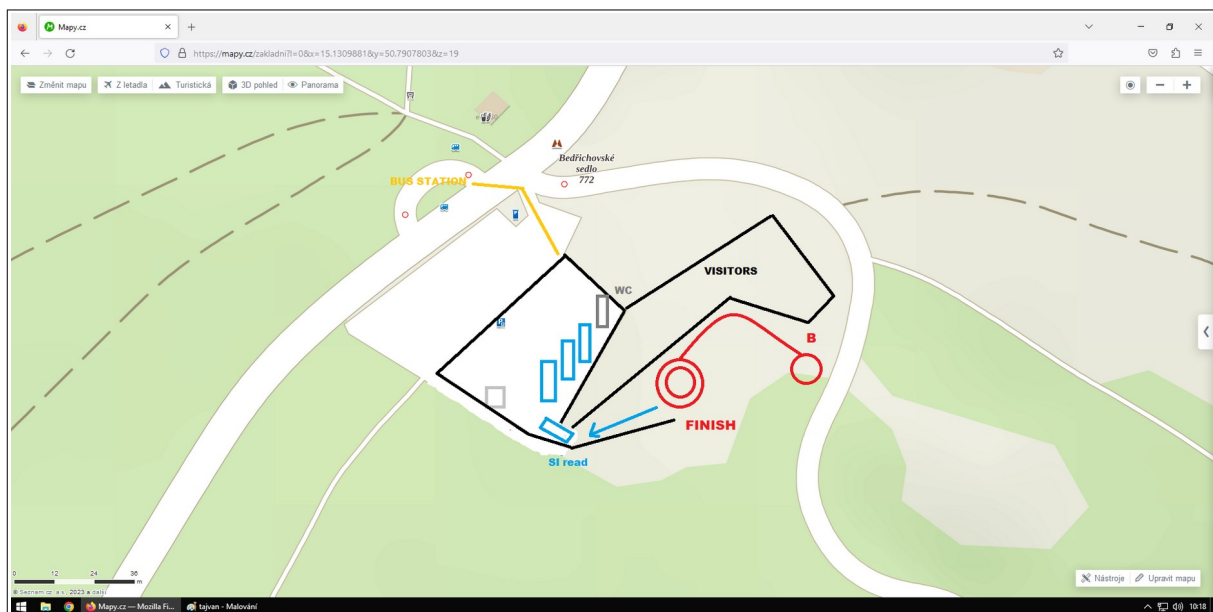
It is only allowed to use official transportation to start, usage of your own vehicles is forbidden!
Transportation of team officials from start to finish area will be provided.



The length of corridor A is 160 m corridor B is 140 m

Finish organisation:

Finish area GPS: 50.7909253N, 15.1300094E



There is a paid parking place in finish area (100 CZK per vehicle and day) .

DETAILED INFORMATION - SPRINT

Schedule

06.30-08.00	Breakfast
08.00	Departure of buses to starting area (competitors and officials)
08.30	Departure of buses to finish area (officials and visitors)
10.00	Start 00
Bus departures from finish area to the event center (approximately)	
Rainy weather: 12:00 - 12:30 - 13:00	
Sunny weather: 12:30 - 13:00	
13.00-15.00	Lunch
17.00	Team officials' meeting
17.30-19.00	Dinner
19.30-21.00	Awarding ceremony (1 st classics + sprint)

Map Skalní brána 1 : 5 000 , E=5m, size 20 x 29 cm, printed on waterproof material Pretex.
It is forbidden to run on the road!

Limit 60 min

Competitors will be called to pre-start area **5min before their start!**

3.5 MHz transmitters for sprint (1 minute cycle - 12s:48s)

- RF power 1 W
- antenna: 8 m vertical + 2m diameter circular counterpoise
- frequency TX 1-5: MOE-MO5 keying speed 50 PARIS 3.53 MHz
- spectators control: S keying speed 50 PARIS 3.55 MHz
- frequency TX 1F-5F: MOE-MO5 keying speed 70 PARIS 3.57 MHz
- finish beacon: MO keying speed 50 PARIS 3.60 MHz

Flags: 30x30 cm 3-sided white and orange flag at S (spectator) and B (beacon) controls, red/white striped SI stand (no flag) at all other controls.

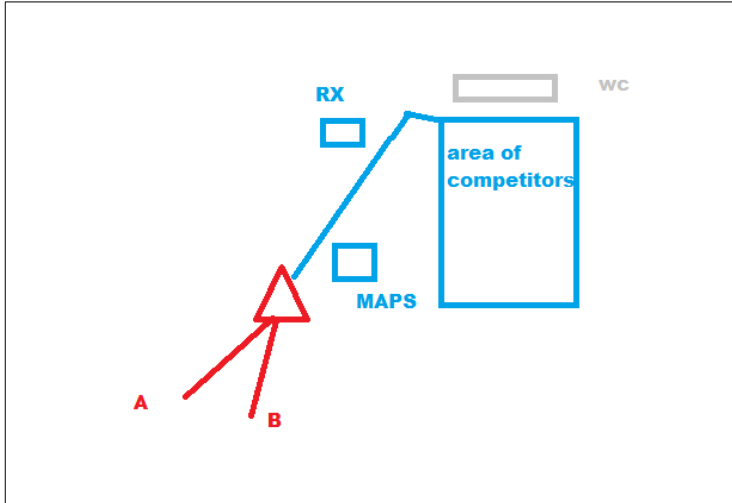
Registering devices: SportIdent at all controls (NOT in the AIR mode), control numbers and bands are written on the SI units.

List of transmitter and band assignments for each category:

Category	1.loop	Spectator	2.loop	Beacon	Corridor
W19	1 2 3 5	S	1F 3F 4F 5F	B	A
W21	1 2 3 4 5	S	1F 2F 3F 4F	B	A
W35	1 2 4 5	S	1F 2F 3F 4F	B	B
W45	1 3 4	S	1F 2F 4F 5F	B	A
W55	1 2 4	S	1F 3F 4F 5F	B	B
W65	1 2 3	S	2F 3F 5F	B	A
M19	2 3 4 5	S	1F 2F 3F 5F	B	B
M21	1 2 3 4 5	S	1F 2F 3F 4F 5F	B	B
M40	1 2 3 4	S	1F 2F 3F 4F	B	B
M50	1 3 4 5	S	2F 3F 4F 5F	B	A
M60	1 3 5	S	1F 2F 4F 5F	B	A
M70	1 2 5	S	2F 4F 5F	B	B

Start organisation:

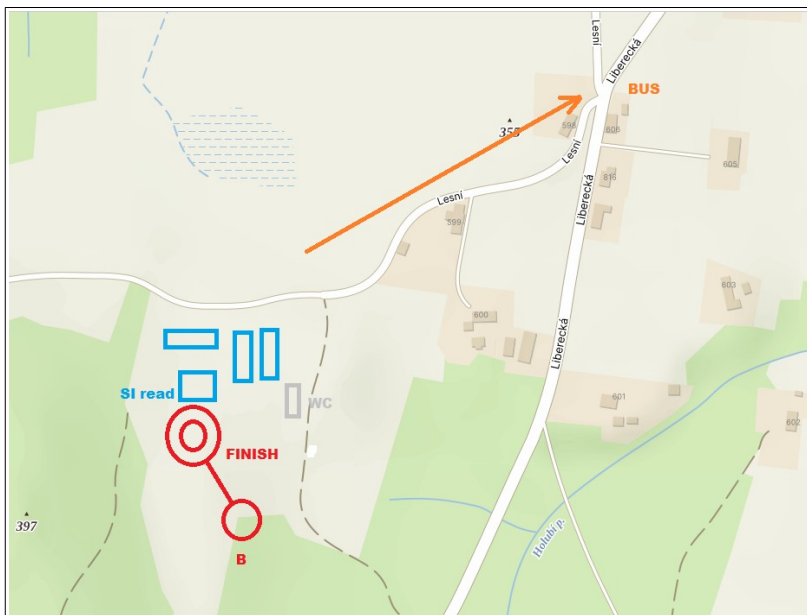
It is only allowed to use official transportation to start, usage of your own vehicles is forbidden!
Transportation of team officials from start to finish area will be provided.



The length of corridor A is 70 m corridor B is 50 m

Finish organisation:

It is NOT ALLOWED to arrive with personal vehicles in the finish area or to park them there, the nearest parking lot is 2km away!



Finish area GPS: 50.8922981N, 15.1085303E

Hygienic measures against African swine fever virus:

Every competitor is obliged to go through disinfection corridor after reaching the finish line and disinfect his shoes!

DETAILED INFORMATION - CLASSICS 2

Thursday, August 31

2nd classics: 144 MHz (W19, W21, W35, M19, M21, M40)
3.5 MHz (W45, W55, W65, M50, M60, M70)

Schedule

06.30-08.00 Breakfast, lunchpackage
08.00 Departure of buses to starting area (competitors and officials)
09.30 Departure of buses to finish area (officials and visitors)
10.00 Start 00

Bus departures from finish area to the event center (approximately)

Rainy weather: 13:00 - 13:30 - 14:00 - 14:45 - 16:00

Sunny weather: 13:30 - 14:00 - 14:30 - 15:00 - 16:00

17.00 Team officials' meeting
17.30-19.00 Dinner

Map Břízky 1 : 10 000, E=5m, size 30 x 29 cm, printed on waterproof material Pretex.
It is forbidden to run on the road!

Limit 150 min

Competitors will be called to pre-start area **15 min before their start!**

3.5 MHz transmitters (classics)

- RF power 3 W
- frequency: TX 1-5: MOE-MO5 3.53 MHz, finish beacon: MO 3.60 MHz
- antenna: 8 m vertical + 8 m single radial counterpoise

144 MHz transmitters (classics)

- RF power 1 W ERP
- frequency: TX 1-5: MOE-MO5 144.50 MHz, finish beacon: MO 144.85 MHz
- antenna: crossed dipoles 2.5 m above ground level

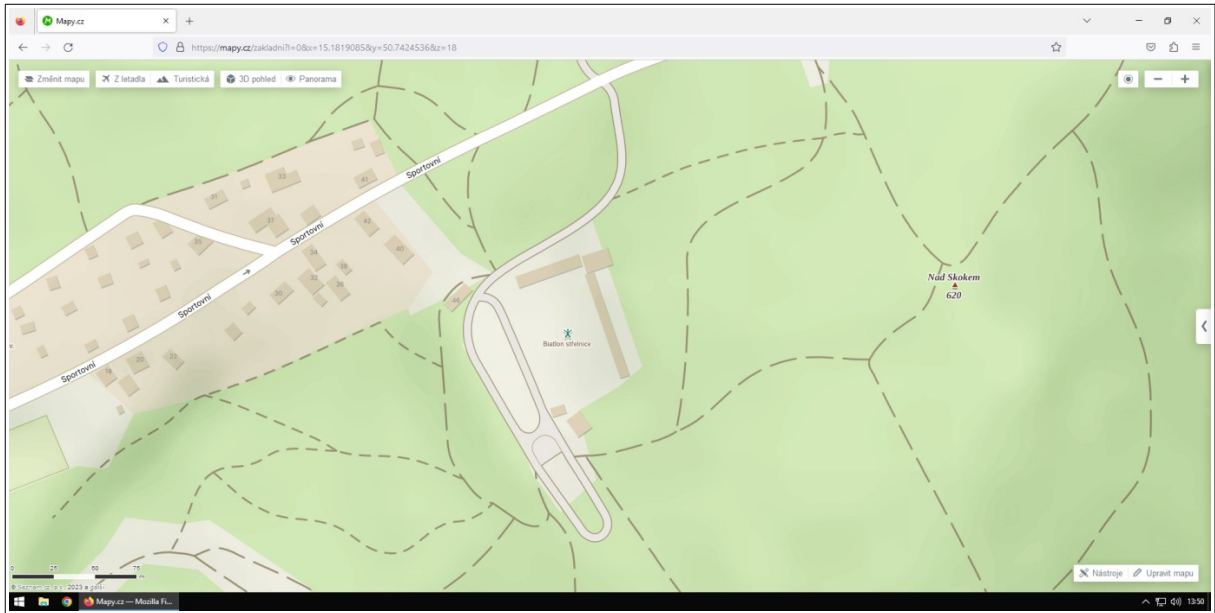
Flags:

- 3.5 MHz band: standard 30x30 cm 3-sided white and orange flag at all controls
 - 144 MHz band: 30x30 cm 3-sided white and orange flag with a blue vertical stripe at all controls
- Registering devices:** SportIdent at all controls (NOT in the AIR mode), control numbers and bands are written on the SI units.

RESTRICTION:

In the competition area, there is a biathlon shooting range and training circuit for cross-country skiing used for roller skis training. When running nearby, watch out for skiers on roller skis!

If there is a biathlon training on the day of competition, whole biathlon shooting range will be RESTRICTED AREA! This will be clearly marked on the map in pre-start area.

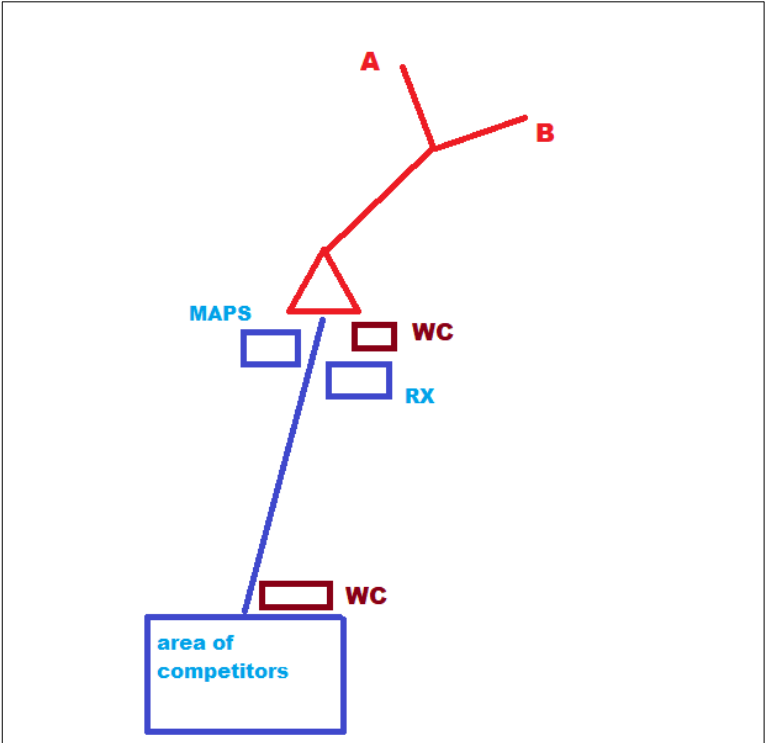


List of transmitter and band assignments for each category:

Band	Category	TX	Beacon	Corridor
2 m	W19	1 2 3 4	B	B
2 m	W21	1 2 4 5	B	B
2 m	W35	2 3 4 5	B	B
2 m	M19	1 3 4 5	B	A
2 m	M21	1 2 3 4 5	B	A
2 m	M40	1 2 3 5	B	A
80 m	W45	1 2 3 5	B	B
80 m	W55	1 2 4 5	B	B
80 m	W65	1 2 4	B	B
80 m	M50	1 2 3 4 5	B	A
80 m	M60	1 3 4 5	B	A
80 m	M70	1 2 5	B	A

Start organisation:

It is only allowed to use official transportation to start, usage of your own vehicles is forbidden!
Transportation of team officials from start to finish area will be provided.

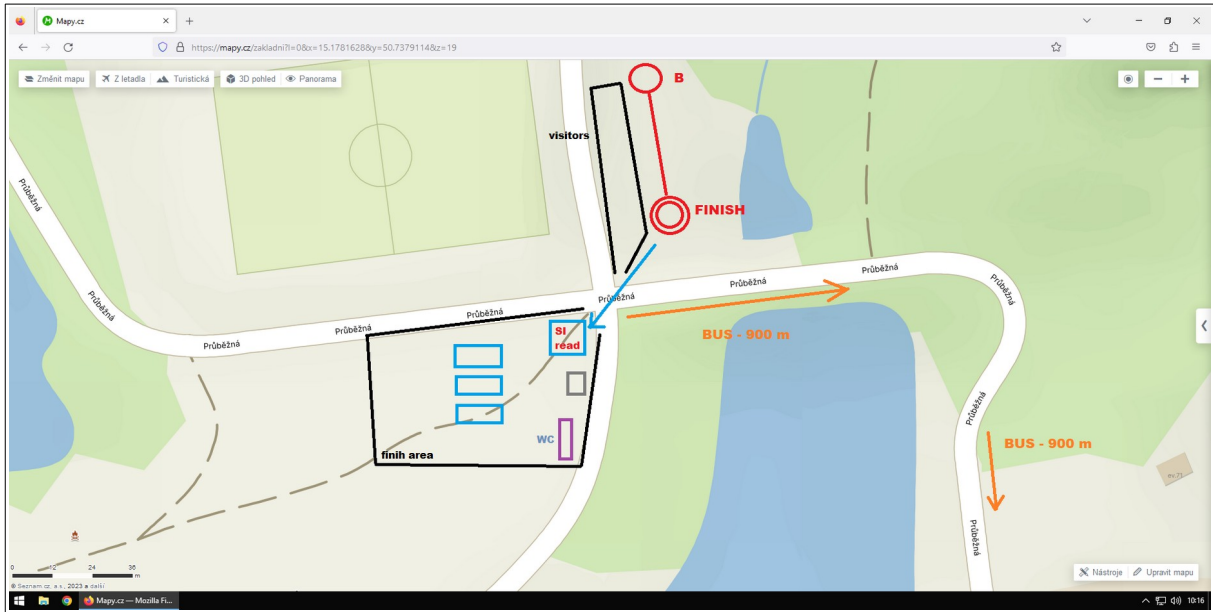


The length of corridor A is 150 m corridor B is 130 m

Finish organisation:

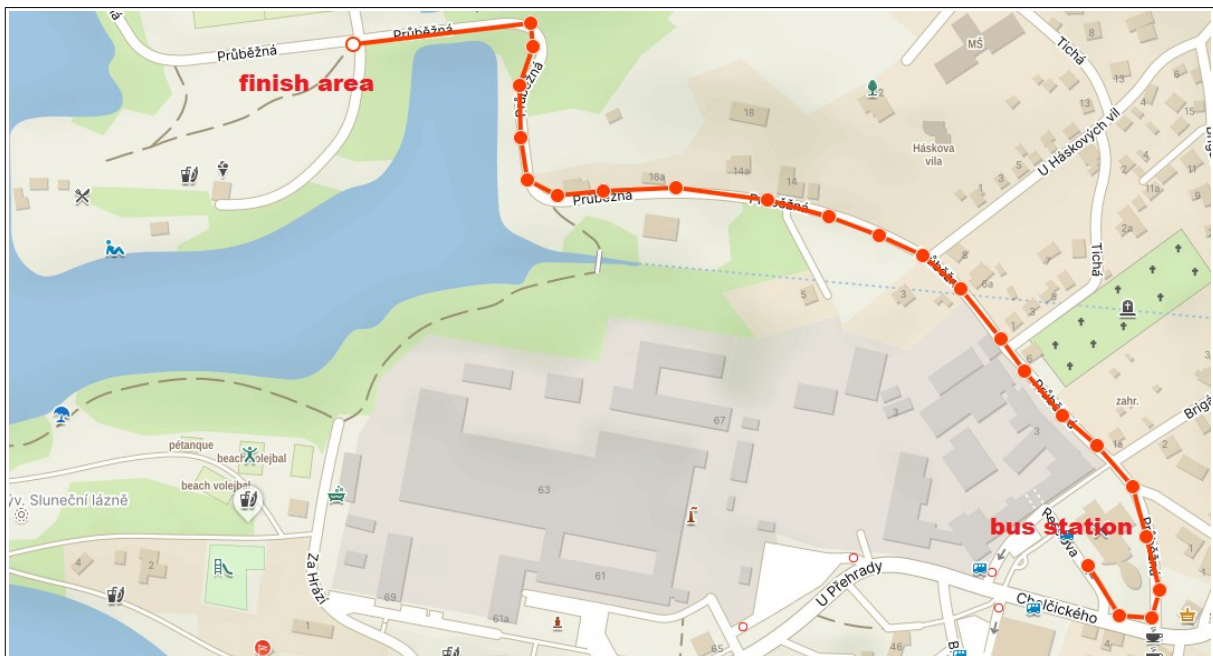
There is limited parking space for cars in the finish area!

Finish area GPS: 50.7378783N, 15.1780961E



Bus station location

Bus station is cca 900 m far from the finish area. Route will be marked with ribbons.



DETAILED INFORMATION - FOXORING

Friday, September 1

Schedule

06.30-08.00 Breakfast
08.00 Departure of buses to starting area (competitors and officials)
09.30 Departure of buses to finish area (officials and visitors)
10.00 Start 00

Bus departures from finish area to the event center (approximately)

Rainy weather: 12:30 - 13:15 - 14:00

Sunny weather: 13:00 - 13:30 - 14:00

13.00-15.00 Lunch

17.00-18.30 Dinner

Map

Bramberk 1 : 10 000 , E=5m, size 33x28 cm, printed on waterproof material Pretex.

Transmitters for each category are printed on the map.

It is forbidden to enter restricted areas before finishing the race!

Limit

120 min

Competitors will be called to pre-start area **5 min before their start!**

3.5 MHz transmitters for foxoring (continuous)

- RF power 10 mW, beacon : 1 W

- antenna: field transmitters 30 cm vertical + no counterpoise

finish beacon 8 m vertical + 8 m single radial counterpoise

- frequency: TX 1, 2, 1F, 2F MOE, MOI 3.53 MHz

TX 3, 4, 3F, 4F MOS, MOH 3.55 MHz

TX 5, 5F MO5 3.57 MHz

finish beacon MO 3.60 MHz

TX 1F-5F, finish beacon : keying speed 50 PARIS, TX 1F-5F: keying speed 70 PARIS

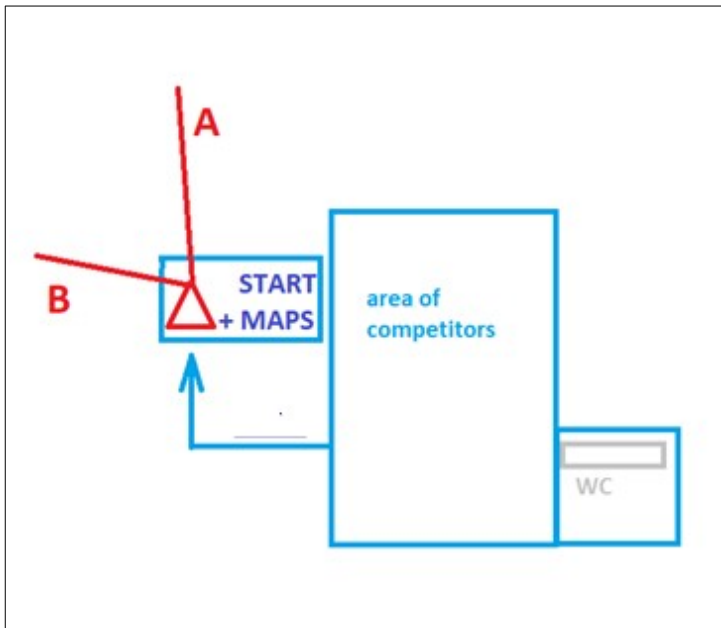
Flags: 30x30 cm 3-sided white and orange flag at B (beacon) controls, black striped SI stand (no flag) at all other controls.

Registering devices: SportIdent at all controls (NOT in the AIR mode), control numbers are written on the SI units.

List of transmitter and band assignments for each category:

Category	TX	Beacon	Corridor
W19	2 3 4 5 3F 4F 5F	B	A
W21	1 2 4 5 1F 2F 3F	B	A
W35	2 4 5 1F 2F 3F 4F	B	A
W45	2 3 4 5 1F 2F 5F	B	B
W55	2 3 5 1F 2F 4F 5F	B	B
W65	2 3 5 1F 5F	B	B
M19	1 2 4 1F 2F 3F 4F 5F	B	A
M21	1 2 3 4 5 1F 2F 3F 4F 5F	B	A
M40	1 2 3 4 5 1F 3F 4F	B	A
M50	1 2 4 5 1F 3F 4F	B	B
M60	2 3 5 1F 2F 3F 5F	B	B
M70	2 1F 2F 3F 4F 5F	B	B

Start organisation:

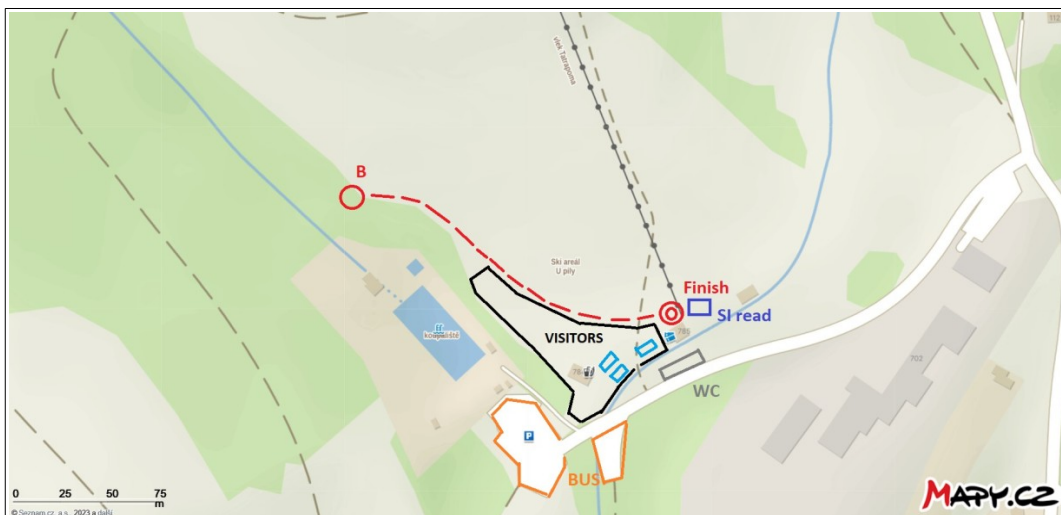


It is only allowed to use official transportation to start, usage of your own vehicles is forbidden!
Transportation of team officials from start to finish area will be provided.

The length of corridor A is 80 m corridor B is 80 m

Finish organisation:

finish area GPS: 50.7487411N, 15.2148317E



There is a swimming pool and a buffet in the finish area, where you can buy some refreshment (beer, lemonade, coffee, sausages, etc.).

DETAILED INFORMATION - TRAINING CAMP

Training camp is organised as self-serviced. Competitors will transport themselves to the start/finish area (on foot, by car or by public transport). Parking space is limited! In the start, competitors will start themselves with SportIdent start and in the finish, they will read out their registering devices at organizer.

It is possible to leave your belongings with the organizer in the marked place at gathering area.

A shelter will be built in case of rainy weather.

Friday, August 25 - Classics

7.00-8.00	Breakfast
9.00-16.00	Training for both classics
13.00-14.00	Lunch
18.00-19.00	Dinner

Map: Strážní buk 1:10000 size A4 (21x30cm)

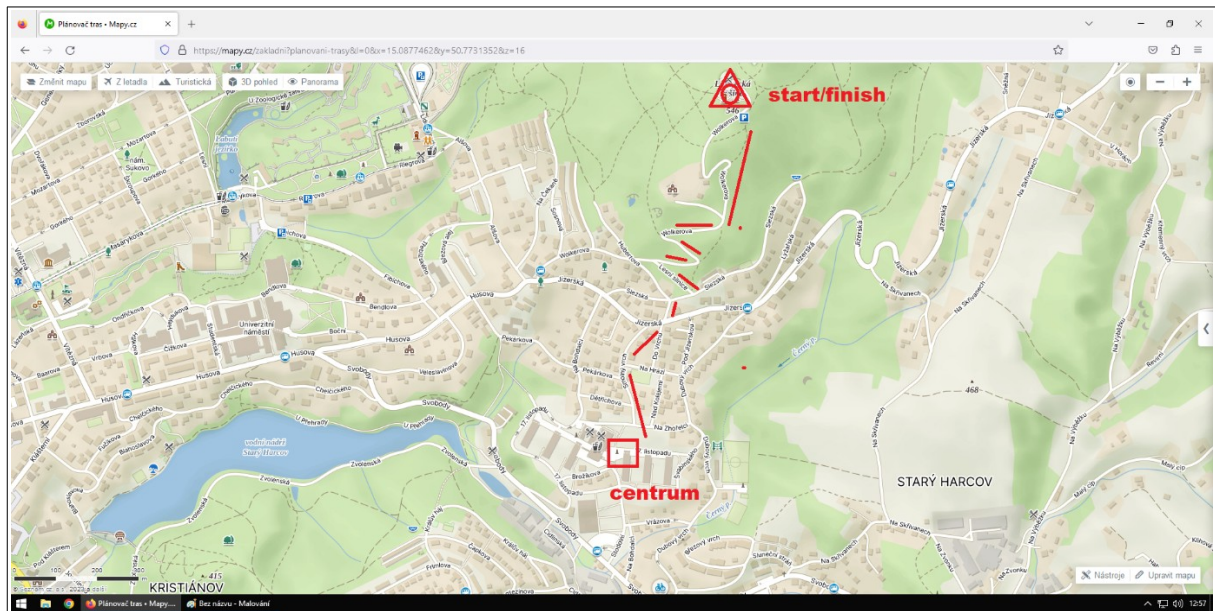
Gathering area (start/finish) :

GPS 50.7782456N, 15.0922522E - Liberecká výšina (Wolkerova street)

In the gathering area, we recommend to visit Liberecká Výšina tower with beautiful view (20CZK per ticket). <https://www.libereckavysina.com/>

..

There will also be an opened buffet to buy some refreshment.



Transport:

- Personal vehicles – K+R: it is only possible to unload competitors and go away. It is necessary to park elsewhere because of different event.
- On foot - gathering area is 900 m far from the event center

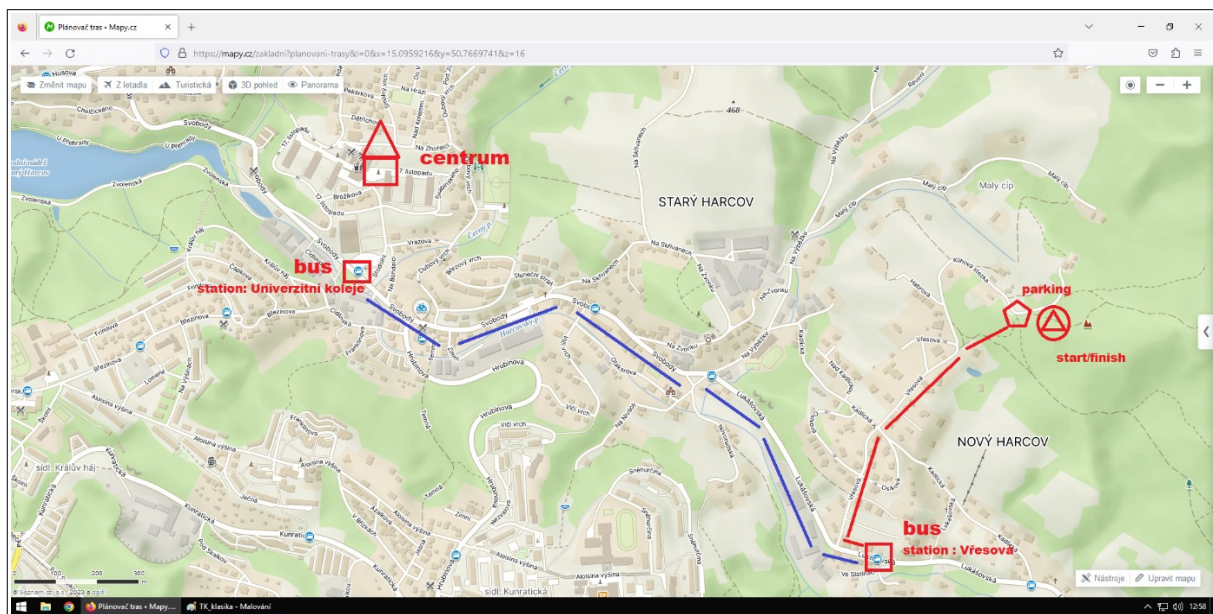
Saturday, August 26 – Foxoring, sprint

7.00-8.00	Breakfast
9.00-13.00	Foxoring training
13.00-14.00	Lunch
14.00-16.00	Sprint training
18.00-19.00	Dinner

Map: Maliník – west	1:10000 (foxoring)	size A4 (21x30cm)
Maliník west (cutout)	1:5000 (sprint)	size A4 (21x30cm)

Gathering area (start/finish):

GPS 50.7673939N, 15.1096733E - Klihová stezka



Transport :

- Personal vehicles (parking space for cca 8 vehicles)
- public transport no. 15, from bus stop „Univerzitní koleje“ to the stop „Vřesová“, then cca 800 m on foot; competitors will receive 4 bus tickets for public transport (2 times there and back) upon request

Public transport timetable – Saturday, August 26:

Univerzitní koleje – Vřesová (to the gathering area)

7:58 – 8:58 – 9:58 – 10:58 – 11:58 – 12:58 – 13:58 – 14:58

Vřesová – Univerzitní koleje (back to the event center)

8:16 – 10:16 – 12:16 – 14:16 – 16:16

Competitors will ask for their public transport tickets before 16.00 Friday, August 25.

Partners and sponsors:

